

MADE
IN
JAPAN

Highly Qualified Walking Canes



Kainos
UNIVERSAL DESIGN BY
 **SINANO**



GRAND KAINOS

*A feel of elegance
created by muted colors and
traditional European patterns*

- Shaft / Aluminium $\phi 18 + \phi 16$
- Weight / 315g
- Handle / High-grade ebony
- Size / 31~35 inch
(adjustable per 1 inch)

- Non-Slip Rubber Cane Tip

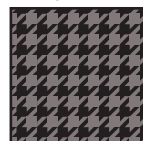


- Original pouch



Houndstooth
Black

S-14724



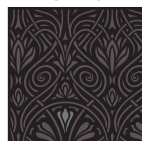
Art Deco
Black

S-14731



Art Nouveau
Black

S-14748



Art & Crafts
Black

S-14755



Herringbone
Black

S-14717



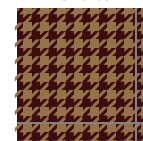
Paisley
Brown

S-13291



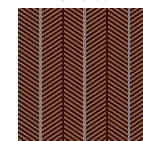
Houndstooth
Brown

S-13260



Herringbone
Brown

S-13253



Tartan
Brown

S-13284



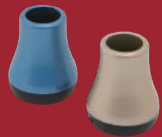


DONNA

Characteristic and elegant designs for your sophisticated life

Various design patterns for your various fashion

- Shaft / Aluminium 18φ+16φ
- Weight / 305g
- Handle / Luxury acrylic
- Size / 29~33 inch (adjustable per 1inch)
- PP10-16 (Colored cane tip)

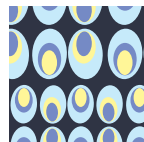


- Original pouch



Nazar

S-14465



Oriental

S-14472



Lunamezza

S-12874



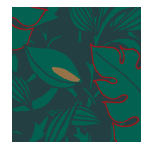
Pantera

S-12904



Giardino

S-13208



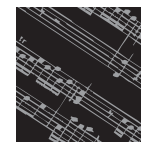
Abstract

S-13185



Sonata

S-13178



Mussaenda

S-13772



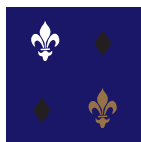
Azzuro

S-12898



Bourbon

S-13673



TRAVELER Series -Folding canes-



Blue
S-14298

Green
S-14304

Beige
S-12560

Silver
S-12553

Pink
S-12546

Purple
S-12539

Wine
S-12522

Kainos T-1 Hana KOMON

Beautiful color variation based on Japanese-traditional petite floral pattern

- Shaft / Aluminium $\phi 18 + \phi 16$
- Weight / 300g
- Handle / Luxury acrylic
- Size / 29~33 inch (adjustable per 1 inch)
- Non-Slip Rubber Cane Tip



Glass fiber on the bottom of cane tip provide strong antislip effect on the wet road, ice and snow.

Great portability
Only 10 inch when folded
(all Traveler Series)



Length adjustable canes



Green
S-14281

Pink
S-14267

Purple
S-14274

Kainos Hana ROMAN

Fashionable walking cane with luxury acrylic handle

- Shaft / Aluminium $\phi 18 + \phi 16$
- Weight / 250g
- Handle / Luxury acrylic
- Size / 29~33 inch (adjustable per 1 inch)
- Non-Slip Rubber Cane Tip



SOFT GRIP Series



Soft Grip
The handle is covered by foamed rubber to prevent harm on palm.

SOFT-GA

For those who are likely to get harm from cane handle

- Shaft / Aluminium $\phi 20 + \phi 18$
- Weight / 290g
- Handle / Wood + Foam
- Size / 29~35 inch (adjustable per 1 inch)
- Cane Tip / PP-12



SOFT-GA LONG

Longer size is available on black model

- Size / 33~39 inch (adjustable per 1 inch)

Black S-14397

Antibacterial Handle Series

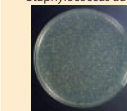


Applying antibacterial agent into a handle for cleanliness

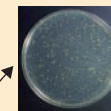
result of experiment

specimens sample: Styrene elastomer

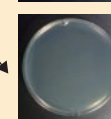
Staphylococcus aureus



After 24 hours



without antibacterial agent



applying antibacterial agent

Reference: SINANEN ZEOMIC CO., LTD

Antibacterial Cane

Keep the handle clean as always touching when use

- Shaft / Aluminium $\phi 18 + \phi 16$
- Weight / 250g
- Handle / PP + Elastomer
- Size / 29~35 inch (adjustable per 1 inch)

Antibacterial Folding Cane

Folding function is applied

- Shaft / Aluminium $\phi 18 + \phi 16$
- Weight / 250g
- Handle / PP + Elastomer
- Size /
 - Brown : 31~35 inch
 - Wine : 29~33 inch (adjustable per 1 inch)



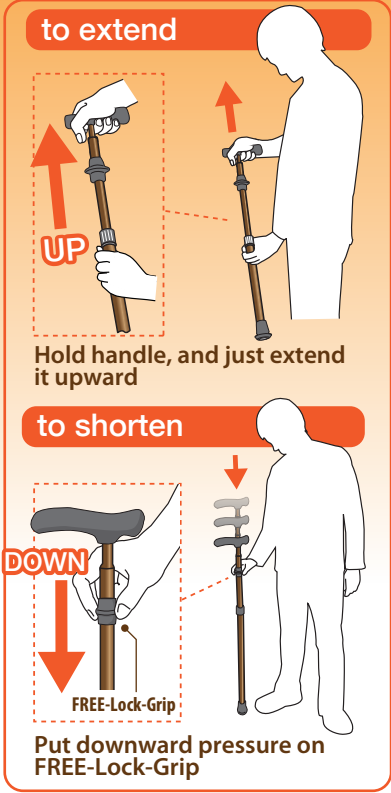
Length Adjustment in 1 sec

Innovative length adjustable cane

Ez Cane PRO



- Shaft / Aluminium $\phi 16 + \phi 18$
- Weight / 330g
- Handle / PP + Elastomer
- Size / 22~37inch (size free)
- Cane tip / PP-11



2本杖 あんしん

SINANO

Simple answer to more safety walking

Double Canes



- Shaft / Aluminium $\phi 16 + \phi 14$
- Weight / 215g (single)
- Handle / Elastomer
- Size / 31~45 inch (adjustable per 1 inch)
- Cane tip / PP-10-14

Ez Cane Pro can solve many situation which users feel inconvenience in daily life.

Even in crowded area

Easy to shorten instantly
theater, restrunt, train, bus and other public area

Even if hard to find to put

Compactable to place anywhere
trolley, inside of car, various counters and more

Even in other hand

Length adjustable by only one hand
when having something in other hand or get injured and incapable to use one hand

What is the benefit of using Double Canes?

Enjoy walking with preventing a fall

Tick
The best way to fix the length
The ratchet button helps secure fixing of the length

Double Canes **Single Cane**
Excellent at keeping physical balance when walking

Combination of Japanese ancestral traditions and modern cane-production technology

Grand Kainos, high-end cane series, meets Japanese traditional handicrafts to produce innovative canes for next generation.



Kainos Meiboku

High quality wood veneer on aluminium cane

A collaboration with Japanese experienced woodcrafters brings warm wooden texture on a useful modern cane.



- Shaft / Aluminium ϕ 18+ ϕ 16
- Weight / 280g
- Handle / High-grade ebony
- Size / 29~35 inch (adjustable per 1 inch)
- Non-Slip Rubber Cane Tip

Walnut
S-14809

Curly Maple
S-14793

Bird's eye Maple
S-14786

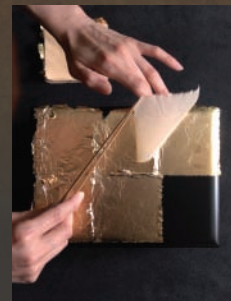


Natural curly grain of fine wood veneer shows the only pattern in the world. What makes this cane evolutionary is that the wood veneer is wrapped around the shaft of cane. This production method allows cane to function useful length adjustment system.

Kainos Kinpaku

The everlasting beauty. Pure gold handicraft.

A collaboration with Kanazawa gold leaf artisans who remain faithful to its ancestral tradition.



- Shaft / Aluminium ϕ 18+ ϕ 16
- Weight / 280g
- Handle / Luxury acrylic
- Size / 31~35 inch (adjustable per 1 inch)
- Non-Slip Rubber Cane Tip

Red
S-14762

Violet
S-14779



The history of Kanazawa gold leaf dates back more than 400 years. The gold leaf has been used in various places for its beautiful sparkle; temples in Kyoto, lacquerware, Buddhist altars, textiles, and more. At present, almost 98% of Japanese gold leaf is produced in Kanazawa.

Kainos Sanada

"Samurai Ribbon" for a cane wrist strap

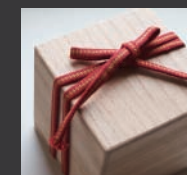
"Samurai Ribbon" as known as "Sanada-Himo" is one of the Japanese traditional fabrics. The name is from legendary samurai family SANADA.



- Shaft / Aluminium ϕ 18+ ϕ 16
- Handle / High-grade ebony
- Black
- Weight / 315g ● Size / 31~35 inch
- Non-Slip Rubber Cane Tip
- Red
- Weight / 305g ● Size / 29~33 inch
- PP10-16 (Colored cane tip)

Red
S-14670

Black
S-14663



Samurai Ribbon used to use this woven ribbon such as dressed up their swords, armor suits and helmets, or tied up important things to their waist with it. Recently, its toughness and beauty as traditional craftwork have revalued in Japan.

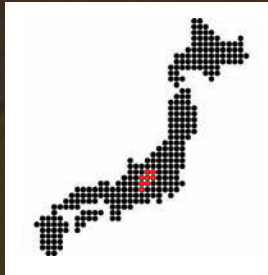
Support Your Walking Life

SINANO, founded in 1919, has acquired technical knowledge and skill through the production of ski pole, trekking poles, welfare canes and walking poles over the years. Our core technology guarantees durability, safeness and usability.

KAINOS, a cane brand which corporates the core technology, promises to be your best partner for walking.

Quality of "MADE IN JAPAN"

SINANO has own production factory. Rather than mass production, SINANO has controlled product quality by every single product in order to keep quality of "MADE IN JAPAN".



Innovation on customer demands

Voice of Customer (VOC) is our motivation to improve and innovate our products. In fact, SINANO has plenty of megaseller products innovated by referring to VOC.



Manufacturing

From designing to manufacturing & selling

What distinguishes SINANO from its competitors is a commitment to covering the entire value creation chain - from the first phase of designing, development, testing and selling.



Support

We regard courteous service as our priority to build a relationship of trust with customers and business partners. Our international staff can respond quickly to your questions and requests.



Customer satisfaction



1104-1 Iwamura, Saku City, Nagano 385-0022, Japan
TEL. +81-267-67-3321 FAX. +81-267-67-3326 URL. <http://www.sinano.co.jp/> E-mail. contact@sinano.co.jp

find us on
facebook